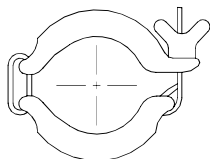




**MORSETTO ENO  
ENO CLAMP  
COLLIER ENO  
ABRAZADERA ENO**

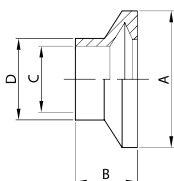
**121 E**



DN	gr
40	200
50	250
60	300
70	350
80	400
100	450

**BOCCHETTONE ENO  
ENO PART  
FERRULE ENO  
ENLACE ENO**

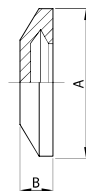
**102 E**



DN	A	B	C	D	gr
40	65,0	25,0	37,0	40,0	130
50	75,0	30,0	49,0	52,0	160
60	86,0	32,0	57,0	60,0	210
70	98,0	38,0	66,0	70,0	260
80	109,0	38,0	81,0	85,0	300
100	128,0	38,0	97,4	101,6	350

**TAPPO ENO  
ENO BLANK  
BOUCHON ENO  
TAPÓN ENO**

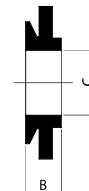
**104 E**



DN	A	B	gr
40	65,0	15,0	100
50	75,0	17,0	150
60	86,0	17,0	250
70	98,0	17,0	300
80	109,0	17,0	325
100	128,0	17,0	350

**GUARNIZIONE PER BOCC.  
SEAL RING FOR PART  
JOINT POUR FERRULE  
JUNTA ENLACE**

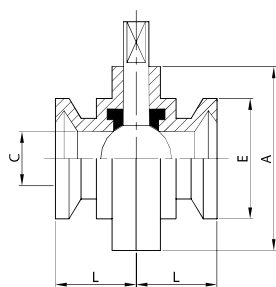
**131 E**



DN	B	C
40	13,0	40,0
50	13,0	50,0
60	13,0	60,0
70	14,0	70,0
80	14,0	80,0
100	14,0	100,0

**V. FARFALLA ENO/ENO  
BUTTERFLY V. ENO/ENO  
V. PAPILLON ENO/ENO  
V. MARIPOSA ENO/ENO**

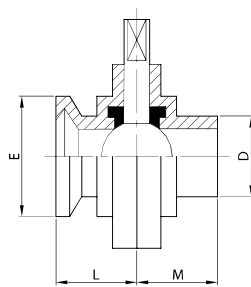
**722 E**



DN	A	C	E	L	gr
40	92,0	37,0	65,0	38,0	1.450
50	105,0	49,0	75,0	40,0	1.870
60	112,0	57,0	86,0	40,0	2.300
70	125,0	66,0	98,0	40,0	2.755
80	137,0	81,0	108,0	41,0	3.200
100	157,0	97,4	129,0	44,0	3.940

**V. FARFALLA ENO/EL.  
BUTTERFLY V. ENO/PE.  
V. PAPILLON ENO/BL.  
V. MARIPOSA ENO/EL.**

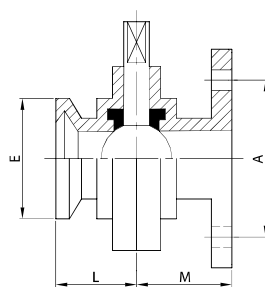
**721 E**



DN	D	E	L	M	gr
40	40,0	65,0	38,0	38,0	1.220
50	52,0	75,0	40,0	40,0	1.570
60	60,0	86,0	40,0	40,0	1.880
70	70,0	98,0	40,0	41,0	2.255
80	85,0	108,0	41,0	42,0	2.750
100	101,6	129,0	44,0	44,0	3.390

**V. FARFALLA ENO/FL.  
BUTTERFLY V. ENO/FL.  
V. PAPILLON ENO/BR.  
V. MARIPOSA ENO/BR.**

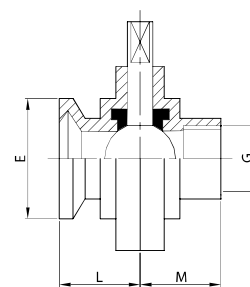
**725 E**



DN	A	E	L	M	gr
40	90,0	65,0	38,0	47,5	2.470
50	110,0	75,0	40,0	49,5	2.920
60	130,0	86,0	40,0	49,5	3.480
70	130,0	98,0	40,0	50,5	3.980
80	150,0	108,0	41,0	51,5	5.400
100	170,0	129,0	44,0	53,5	6.390

**V. FARFALLA ENO/F. FE.  
BUTTERFLY V. ENO/T. FE.  
V. PAPILLON ENO/F. FE.  
V. MARIPOSA ENO/R. H.**

**782 E**



DN	E	G	L	M	gr
40	65,0	1 1/4"	38,0	38,0	1.450
50	75,0	1 1/2"	40,0	38,0	1.870
60	86,0	2"	40,0	40,0	2.300
70	98,0	2 1/2"	40,0	40,0	2.755
80	108,0	3"	41,0	41,0	3.200
100	129,0	4"	44,0	44,0	3.940